



# February

newsletter

## WHAT'S INSIDE

## PASTOR'S COLUMN

- ACTIVITY PAGE** .....10
- ANNIVERSARIES & BIRTHDAYS**.....8
- ADMIN. ASST. HIRED**.....1
- FEBRUARY SERVICES**.....2
- CALENDAR**.....11
- COLLINSVILLE FAITH IN ACTION**.....7
- COUNCIL BRIEFS**.....9
- C/S ILLINOIS SYNOD NEWS**.....6-7
- EDUCATION OPPORTUNITIES**.....5
- FELLOWSHIP OPPORTUNITIES**.....5
- FAIR TRADE MINISTRY**.....6
- FINANCIAL INFORMATION**.....9
- GAME NIGHT**.....5
- HERDING ALPHAS**.....5
- LOOKING AHEAD**.....9
- MISSION, VISION, VALUES**.....3
- MONTHLY GIVING EMPHASIS**.....2
- MUSIC AT OUR LORD'S**.....6
- OLLC OFFICE HOURS CHANGE**.....1
- OLLC MINISTRY TEAM**.....9
- PASTOR'S COLUMN** .....1
- PRAYER CONCERNS**.....8
- REMINDERS**.....8
- SOS**.....5
- THANKS & APPRECIATION**.....3
- VALENTINE'S DINNER & CONCERT**..4
- WORKER BEES**.....5

*Come to me, all you who are weary and are carrying heavy burdens, and I will give you rest. Take my yoke upon you, and learn from me, for I am gentle and humble in heart, and you will find rest for your souls. For my yoke is easy, and my burden is light.*  
 Matthew 11:28-30 (NRSVUE)

Rest. In Genesis, we are told that on the 7th day, God rested. In Exodus, God tells Moses that as Moses leads the people out of their bondage, God will give him rest. Jesus tells us in the fifth chapter of the gospel according to John that "My Father is still working, and I also am working" on the sabbath. And in the much-treasured verse at the top of this column, Jesus promises to give us rest.

Perhaps the Advent devotional we used this year, "The Weary World Rejoices," caught our eye because we are weary. Five years of constant change and the energy needed to reconfigure our lives repeatedly has left many Americans exhausted. Many of you are among the exhausted. Even before the global pandemic, the speed of change and the tensions in political and economic life were wearing many of us out. We need rest.

The good news is God intends for us to have rest. Jesus invites us to come to him and he will give us rest. The gift of sabbath! Sabbath is not a matter of what we do, or don't do. "Sabbath is that space where we acknowledge that our works – even our best and most holy works -cease before a more powerful worker." (Matt Metevelis) Sabbath is that space in our lives where we hear the voice of God. The "law" about everything we must do / should do / could do can finally go silent in that space. And in that silence, we can hear Jesus. Jesus, the love of God poured into human flesh for us, speaks. His voice comforts, encourages, and strengthens us as we rest. So, during this month of February when we celebrate all kinds of love, please remember Jesus loves you so much that he not only allows you to rest, but he also offers you a chance to rest in him.

--Pastor Darla Ann

**NEW OLLC OFFICE HOURS**  
 M-Th 8:30 am - 4:30 pm  
 F 8:30 am - 1:30 pm

### ADMINISTRATIVE ASSISTANT HIRED!

After reviewing many resumes and interviewing several applicants, Linda Spencer, OLLC member, has been hired as the new Administrative Assistant.

**Welcome Linda!**

Please stop by the office and say hello to Linda!



**OUR LORD'S**  
 LUTHERAN CHURCH

Sharing Christ's Love With All -  
 Fulfilling God's Mission With Our Hands

## THE SPIRIT OF OUR LORD'S NEWS

February, 2025 | Volume 59, No. 2  
 A PUBLICATION OF OUR LORD'S LUTHERAN CHURCH  
[www.ourlords.org](http://www.ourlords.org)

**February 1 & 2**

*Fourth Weekend after Epiphany*

Jeremiah 1:4-10

Luke 4:21-30

“Rejected”

**February 8 & 9**

*Fifth Weekend after Epiphany*

Isaiah 6:1-8

Luke 5:1-11

“Unknown Waters”

**February 15 & 16**

*Sixth Weekend after Epiphany*

Psalms 1

Luke 6:17-26

“Turning the World Upside Down”

**February 22 & 23**

*Seventh Weekend after Epiphany*

Genesis 45:3-11

Luke 6:27-38

“Forgiveness”

**Saturdays at 5 pm**

**Sundays at 9 am**

**2nd Sunday at 10:45 am**

**5:00 pm and 9:00 am services will be livestreamed.**



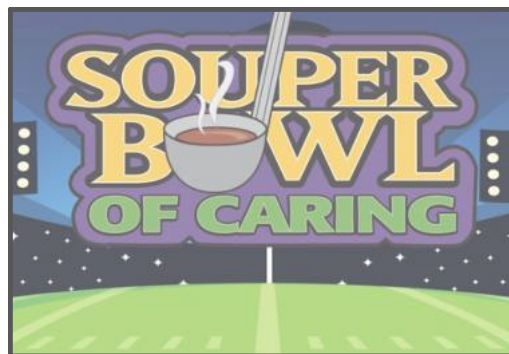
**Listen to services using your phone or tablet!**

Scan the QR code or download AudioFetch on Google Play or iTunes.

**FEBRUARY GIVING EMPHASIS**

***Souper Bowl of Caring/Tote Me Home***

In 1990, Souper Bowl of Caring began with a simple prayer from a single youth group: "Lord, even as we enjoy the Super Bowl football game, help us be mindful of those without a bowl of soup to eat." For over three decades, the Souper Bowl of Caring has empowered individuals, organizations, and schools to raise food and funds for food banks and community-based charities. As millions of people tune in to watch the Super Bowl, we're also tuning in to the needs of our neighbors. The Souper Bowl of Caring is about taking action to fight hunger at the local level, ensuring that no one has to go without the food they need. Through this mission, people learn they can make a positive difference in the world as they collect food, raise money and serve at hunger-relief charities and show caring and compassion in local communities across the country.



The United States of America remains the wealthiest country in the world, yet we have children who do not have enough food at home. Collinsville Unit 10 School District, as a part of the National School Breakfast and Lunch Program, provides free breakfast and lunch to all students. This program is government funded. This program provides children most of their meals throughout the week. Unfortunately, this source of nourishment is not available to them on weekends. The Collinsville Food Pantry has a program called "Tote Me Home" to address this need. The Tote Me Home program sends bags of food home with children who have been identified as food insecure by social workers.

Tote Me Home is completely anonymous; they do not collect the identities, race or sex of the students. The students are provided a bag on Friday on their way out the door for home. To support more than 220 children weekly, the cost of Tote Me Home to the Collinsville Food Pantry exceeds \$50,000 annually. However, because of the anonymity the data required for Federal or State funding is not available. This program is funded only through the generosity of our community.

The Tote Me Home program is an essential tool used to meet the demands of the growing bodies of children. Teachers have reported improved behavior and reduced the student's stress resulting from food insecurity. We want these children to know their community care for them and want them to succeed in life. Your prayerful consideration of the Tote Me Home is yet another way we can help our youth succeed in life and know there is a God that loves them deeply. Share in God's love for our neighbors in need and give generously on our Souper Bowl Days. Donations collected during this year's Souper Bowl of Caring will go to Tote Me Home.







We want to thank Pastor Kratzer and the church family at Our Lord's for their support and love during John's illness, memorial service and bereavement luncheon. It is said to look for the helpers, and we have so many here in our church family. Thank you so, so much.

Love, Kathy Nehrt and Family

## OLLC MISSION, VISION, VALUES, & FOCUS AREAS

adopted January 25, 2025

### **OLLC Mission:**

Sharing Christ's Love With All - Fulfilling God's Mission With Our Hands!

### **Vision:**

A welcoming Christ-centered community, growing in faith and encouraging active participation in God's calling

### **Values:**

We believe that Jesus is our Lord and Savior, therefore we value the following:

- Worship that celebrates our hope through Jesus' resurrection
- Relationships that reflect God's grace
- Compassion for all
- Christian education that encourages questioning and exploration
- Inclusive decision-making

### **Focus Areas:**

#### **Coming Together**

- Foster an inclusive community where everyone is valued and encouraged to share their talents
- Support the development of children, youth, young adults and young families through ministry, engagement, and active participation within the congregation
- Enhance connections between young families and older members
- Build and strengthen deep relationships within the congregation by engaging in meaningful interaction to grow and nurture faith

#### **Growing in Faith**

- Create environments and opportunities for faith formation, fostering spaces for wonder, questioning and reflection
- Engage in diverse worship practices that inspire spiritual growth, celebrating togetherness as a full congregation through worship and expressive music events
- Establish a variety of "connect groups" to spark interest in various areas
- Emphasize practices in worship that equip participants for faithful living in daily life

#### **Serving the Lord**

- Connect the Gospel to our service activities, recognizing Jesus' teachings on loving one another
- Spread the good news through acceptance, action, and benevolence
- Serve one another, our communities, the wider world, and God's creation with compassion, enhancing our mission and expanding our presence in the community
- Continue collaborating with existing community service organizations to broaden service opportunities in Collinsville, Maryville, Edwardsville, Glen Carbon, Troy, and SIUE areas

Our Lord's Lutheran Church presents...

# Spaghetti Dinner & Valentine's Concert

**"Musical reflections on love in all its forms."**

Who:

**Olivia Cross  
Addie Mays  
Brian Gunderson  
Benji Maynard  
Sharifa Black  
Peter Billing**

When/Where:

**Dinner: 6 pm  
Concert: 7 pm  
Fellowship Hall  
Saturday, February 15  
150 Wilma Dr.  
Maryville, IL 62062**

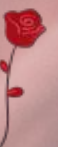
**Admission: \$20/ticket (12 & under free) Tickets may be purchased in advance through the church office or at the door (while they last!). After food expenses, proceeds will go to Tote Me Home: [www.globalgiving.org/projects/tote-me-home/](http://www.globalgiving.org/projects/tote-me-home/)**

*All are welcome!*  
*All are welcome!*



Musical selections will explore romance, heartbreak, and friendship across genres!

To dedicate a song to a loved one, please email Olivia: [oecross@gmail.com](mailto:oecross@gmail.com)







## OLLC will serve on February 11.

Assistance with preparation and serving the meal is needed.  
*Sign up on the signup sheet in the narthex.*

Donations to support OLLC S.O.S. can be given via check, cash, or Note "S.o.S." in the memo line. Contact Gail Jorgenson or the church office with questions.

## Worker Bees Saturday, February 1

Breakfast 7:00 am, Red Apple Restaurant  
Church 8:00 am

If you plan on attending, please confirm by email or text to Chuck Pugh.



## EDUCATION AT OUR LORD'S

- **PRE-SCHOOL - FIRST GRADE SUNDAY SCHOOL;** Sundays in the LC in Room 4 at 10:15 am
- **ELEMENTARY SUNDAY SCHOOL;** Sundays in the LC in Room 2 at 10:15 am
- **CONFIRMATION CLASS - grade 6-8;** Sundays at 10:15 am
- **HIGH SCHOOL CLASS;** Sundays in Harry's Hangout (Youth Room) at 10:15 am
- **OUR LORD'S YOUTH GROUP** will meet at 11:30 am in the Youth Room on Feb. 16.
- **ADULT BIBLE STUDY (led by J. Lemke);** Sundays in the WC Fellowship Hall at 10:15 am
- **QUESTIONS BIBLE STUDY;** Mondays at 10:00 am -- Conference Room (LC)
- **MORNING GLORIES BIBLE STUDY;** 2nd & 4th Thursday @ 10:00 am, WC Fellowship Hall
- **FEEDING THE SOUL;** Wednesdays at 3:00 pm Conference Room (LC)



## OLLC FELLOWSHIP OPPORTUNITIES

### Congregation Game Night Fellowship Hall

February 9, March 9 & April 13  
3:00 - 5:00 pm

Bring your favorite game  
and a snack to share!

**FUN FOR  
ALL  
AGES!**

### OUR LORD'S CRAFTERS -

Crafters will meet **February 26th** in the Fellowship Hall from noon - 3 pm. Contact Kathy Nehrt with any questions!

### SERENDIPITY BOOK CLUB -

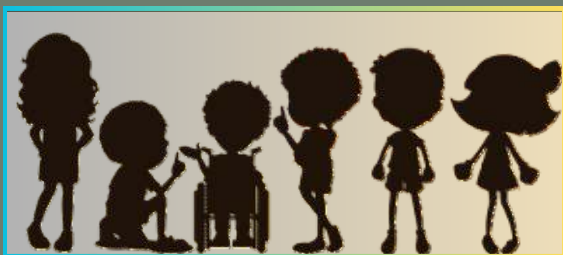
Next Book Club meeting will be **February 17th** at 11:30 am. We will be discussing "Eyeliner - A Cultural History" by Zahra Hankir.

### CRAFTS & LAUGHS

Crafts & Laughs will meet in the spring. Stay Tuned.

### TUESDAY TEA CRAFTS & LAUGHS

Will meet quarterly in the 2025. Stay tuned for next planned event information.



## HERDING ALPHAS

### "Herding Alphas"

OLLC ministry for families with children of the alpha generation! (children born 2010 through 2025)

February 23rd, 1pm-5pm, Mac's in Highland

March 29th, 1pm-5pm, Camelot Bowl, Collinsville

April 4 & 5, Feed My Starving Children Mobile Pack Event, Edwardville  
May - TBD

For additional information contact the church office.

## FELLOWSHIP REMINDERS

- Following Fellowship/Hospitality please clean all surfaces including sweeping floors, emptying trash, and returning all tables and chairs to original placement.
- Wash, dry, and return all kitchen utensils and equipment to proper location. Photographs are located inside all cabinet doors and drawers to guide you when putting away equipment and utensils.
- Contact Cindy Pugh to discuss the donation of new and used household items for use in the church kitchen.

# Chance Choir

**REHEARSALS: Wednesdays 6:15-7:15 pm**  
**PERFORMANCES: 1-2 Sundays a month**

Contact Addie Mays for additional information.  
 love2haveu@ourlords.org




# Handbell CHOIR

**REHEARSALS: Wednesdays 7:15-8:15 pm**  
**PERFORMANCES: 1-2 Sundays a month**

Contact Addie Mays for additional information.  
 love2haveu@ourlords.org

# Praise BAND

**REHEARSALS: Saturdays 3:30 pm**  
**PERFORMANCES: Saturdays 5 pm**

Contact Olivia Cross for additional information.  
 oecross@gmail.com



## FAIR TRADE MINISTRY



For those whose work is limited by poverty or social circumstance, or where factory work and other employment options are unavailable, our fair trade business model has built sustainable income and opportunity.

For many Fair Trade artisans and farmers, handcrafting is the only option available to earn vital income to support their families.

Since 1949, SERRV International has believed in the critical role handcrafting plays in global employment. Our vision for a better world in the making® is driven by a belief in fair income for all.

## CENTRAL-SOUTHERN ILLINOIS SYNOD NEWS

# The Serenity Prayer

God grant me the serenity  
 to accept the things  
 I cannot change;  
 courage to change  
 the things I can;  
 and wisdom to know  
 the difference.

Living one day at a time;  
 enjoying one moment at a time;  
 accepting hardships as  
 the pathway to peace;  
 taking, as He did, this sinful world  
 as it is, not as I would have it;  
 trusting that He will make all  
 things right  
 if I surrender to His Will;  
 that I may be reasonably happy  
 in this life  
 and supremely happy with Him  
 forever in the next.  
 Amen.

**REINHOLD NIEBUHR**

### Excerpt from Illinois ELCA Bishops Pastoral Message on Executive Orders



Through scripture, our faith teaches us that every human being is created in the image of God. That image transcends nations and boundaries, and calls us to see the dignity and value inherent in each of us. That image binds us together in a common humanity and concern for one another. It is out of this faith commitment that we are concerned with immigration policies and the means by which they are enforced.

We call for an immigration policy and its enforcement that shows care for the neighbor. We call for an immigration policy and its enforcement that respects the dignity and humanity of all. We call for an immigration policy that reflects the values of justice and mercy and care for our common humanity. We call for an immigration policy and its enforcement that does not exploit vulnerable people or dehumanize the stranger or alien in our midst.

We call for an immigration policy and its enforcement that respects and does not target places of worship, education, and medical care, traditionally sites where basic human needs are met. We call for an immigration policy and its enforcement that honors those in law enforcement who strive to live out their vocation faithfully.

As a church, the ELCA will continue to advocate for laws and policies that show respect and care for our common humanity. This includes fair, equitable, and just immigration laws that provide paths to citizenship and entry; opportunities for asylum and refuge; and concern for the dignity and safety of all.

In holy care for all beloved humanity who bear the image of God,  
*The Rev. Stacie Fidler, Bishop, Northern Illinois Synod — ELCA*  
*The Rev. Yehiel Curry, Bishop, Metro Chicago Synod — ELCA*  
*The Rev. Greg Busboom, Bishop, Central/Southern Illinois Synod — ELCA*



## U.S. Wildfires

Multiple wildfires have broken out across Los Angeles County in California, with tens of thousands of people under evacuation orders. Sparked by dry conditions, strong winds and a limited water supply, these fires have destroyed homes and businesses and have led to injuries and loss of life. News is still unfolding about the full impact as firefighting efforts continue.

Lutheran Disaster Response is coordinating with the Southwest California Synod, Pacifica Synod and other partners to assess the needs of people

impacted by the wildfires. We will work with them to provide for immediate needs and recovery amid the widespread destruction. Lutheran Disaster Response is committed to accompanying recovering communities for months and years to come.

*What you can do? Pray.*

Please pray for communities in California impacted by the wildfires. May God's healing presence bring them peace and hope in their time of need and give strength to those working diligently to contain the fires and care for affected communities.

*What you can do? Give.*

Your gifts to [Lutheran Disaster Response](#) equip us to respond to communities affected by wildfires and related disasters. These gifts also empower us to respond to disasters whenever and wherever they strike. Gifts to "[U.S. Wildfires](#)" will be used in full (100%) to assist those affected by wildfires until the response is complete



### Living Lutheran Returns to Print

A printed Living Lutheran magazine will return in 2025 with four issues — spring, summer, fall, and winter. Each issue will feature the stories you know and love along with updates on the church and your ELCA community.



The cost for one year will be \$19.95 for an individual subscription and \$17 per year per subscriber for a congregation group subscription (minimum 10 copies). To start receiving the print magazine, individuals and congregations can sign up at [LivingLutheran.org/subscribe](https://LivingLutheran.org/subscribe). For congregation plans, enter the name of your church at this site, along with the email of the person who will be overseeing the subscription plan.

### Nominate Young Musicians for Lutheran Summer Music

Enrollment is filling fast for the LSM 2025! Students come together in an immersive musical community that connects the pursuit of musical growth with the joy of Lutheran church music traditions. LSM welcomes musicians of all kinds: brass, woodwinds, strings, percussion, piano, organ, voice, harp, guitar, handbells, and more.



Know a young person (grades 8-12) who would benefit from this life-giving and joyful musical community? Nominate them for LSM today at [LSMacademy.org/nominate](https://LSMacademy.org/nominate). LSM 2025 takes place at Valparaiso University from June 22-July 20 (half session runs through July 6). Standard enrollment is open now through March 1.

### COLLINSVILLE FAITH IN ACTION



Celebrate Valentine's Day and Collinsville Faith in Action's February 14th anniversary. Place your order for a wrapped carnation delivered to your friend, family member, or neighbor on Valentine's Day. With a personalized note from you, our volunteers will deliver the flowers for just a \$5 donation. Please call 618-344-8080 or stop by our office no later than February 8 to place your order. Your support funds services for community members ages 60 and up.

Did you know there is a national loneliness epidemic? Loneliness and social isolation can be especially dangerous for older people. To combat loneliness, Collinsville Faith in Action offers a Circle of Friends® program that brings people together and helps them build connections with their community and build friendships with one another. Circle of Friends® participants meet 12 times (including field trips) and registration for the next session is now open. There is no charge for this service. Call 618-344-8080 for more information and to register.

Collinsville Faith in Action is hiring a part-time bookkeeper to assist with financial operations and grant reporting. Our offices are centrally located in the heart of uptown Collinsville, and the hours are flexible (10-20 hours per week). If you or someone you know wants to be a part of the good work CFiA does in the community, please visit our website at <https://fiacollinsville.org/> or call us at 618-344-8080 for more information and instructions on how to apply.

In gratitude, *Lisa Ciszczon Brennan - Executive Director*

## PRAYER CONCERNS

Everyone listed here is important to a person of the congregation. Please include them in your praying throughout the week so that they know and feel God's power and presence. We will usually keep names on this list for three to four weeks. Please let us know if an individual should be removed before then or if there is a change in their condition that requires ongoing prayer. Member names may be listed for much longer periods of time

### CONGREGATION MEMBERS

### FAMILY & FRIENDS



Don Klingsick	Joyce Tatjenhorst
Dan Homes	Brian Kassing
Rod Orr	Irene VanHooser
Don Simonson Sr.	Mike Williams
Nicole Williams	Emily Callahan
Jan Jensen	Dave Chaffee
Linda Spencer	JoAnn Hartke
Robin Wellener	April Clark
Caroline Menz	Annie Jackson
Kraig Gunderson	Cynthia Haggitt
Barbara Watz	

Jamie Moravec	Tim Garber
Ken Bunetic	Rose K.
Tommy Banks	Jim R.
Carl Bruntjen	Nicci Essington
Shelley Bruntjen	March Banks
Michael Echevarria	Kitty Jo Edgar
Dave Ritcher	Marilyn Dichsen
Phil Childers	Denise Burton
Paul & Paula Simonson	Marilyn & Paul
Marshall	Clyde Donovan
Bob Dunn	Spurgeon Family
Amanda Seelbach	Bill Larson
Robert Lee "Bobby" Kirkman	Janet Borowitz

### PRAY FOR THOSE THAT HAVE DIED & FAMILIES THAT ARE GRIEVING

Family and friends of Leonard Stensland.

Family and Friends of Myrna Curtis (cousin of Deanne Holshouser).

### PRAY FOR OUR MILITARY PERSONNEL

Lance Cpl. Clayton Campbell	Staff Sgt. Skipper Smith	Erica Webb, US Private E-3	Amador Ochoa
Major James Carmichael	Sgt. Matthew Spencer (Ret.)	SrA Paul Kampwerth	Capt. Blake Crosby
Airborne Ranger Keegan Crosby	Staff Sgt. Stephan Spencer	John Meyer	Josh Pace
Staff Sgt. Tyson Crosby	Zach Huff	Zachary Neubauer	Scott Prengel
SPC Bill Homes	Jake Randall		

### CELEBRATIONS THIS MONTH

## February Birthdays

## February Anniversaries

Ron Blotevogel	Kendyll Pugh	Carole Callahan	Erin Morris	Chuck & Cindy Pugh
David Kassing	Kennedi Pugh	Marian Steinmann	Cynthia Haggitt	Eric Sutton & Peggy Pick-Sutton
Lynn Kempf	Emily Truckenbrod	Chris Comrie	Samuel Huster	Steve & Deb Perry
Sean Rimar	Sawyer Blotevogel	Carli Orr	Vicki Schorr	
Mari Short	Tim Schoenecker	Brooke Wieser	Bradley Bush	
Greg Fremder	Fred Tatjenhorst	Darrell Bruhn	Kathy Hoelscher	
Lisa Micnheimer	Terry Menz	Barbara Sparks	Anita Steinmann	
Georgeann Smithies	Kathy Nehrt	Joyce Tatjenhorst		
Brad Bush	Megan Waterman Kolosieke			

### REMINDERS

#### PRAYER LIST

Please let the office know if you would like to add a new person, remove a current person, or change the status of anyone on our prayer list. OLLC practice includes removing individuals from the prayer lists **after 8 weeks** unless an update is received.

#### PRAYER VENTURES

Two pages of monthly prayer support for ELCA ministries are available at: [www.elca.org/Resources/Prayer-Ventures](http://www.elca.org/Resources/Prayer-Ventures)

#### WHEN YOU HAVE CHANGES

Please let the church office know of changes to e-mail address, mail/resident addresses, telephone numbers, job, college, graduations etc.

#### OTHER INFORMATION

Evangelical Lutheran Church in America -- <https://www.elca.org/>  
Central Southern Illinois Synod -- <https://www.csis-elca.org/>



## MARCH

- March 1 & 2 - Bold Women's Day
- March 4 - Shrove Tuesday
- March 5 - Ash Wednesday
- March 9 - Daylight Savings Time begins
- March 9 - OLLC Game Night
- March 11 - OLLC Serves SOS
- March 12, 19, 26 - Lent Services
- March 29 - Herding Alphas

**Giving Emphasis:**  
*Lutheran Social Services  
of Illinois*

## APRIL

- April 2 & 9 - Lent Services
- April 4 & 5 - Feed By Starving Children Mobile Pack Event
- April 12 - 3rd Annual Pet Expo
- April 13 - OLLC Game Night
- April 13 - Palm Sunday
- April 17 - Mediterranean Meal
- April 18 - Good Friday
- April 20 - Easter

**Giving Emphasis:**  
*Lutheran Social Services  
of Illinois / Faith in Action*

## MAY

- May 5 - Cinco de Mayo
- May 11 - Mother's Day
- May 18 - All Church Picnic
- May 26 - Memorial Day

**Giving Emphasis:**  
*Vacation Bible School*

## OLLC MINISTRY TEAM

### OLLC STAFF

**The Rev. Dr. Darla Ann Kratzer**  
Pastor

**Linda Spencer**  
Administrative Assistant

**Addie Mays**  
Director of Worship Music for  
Sundays & Special Services

**Olivia Cross**  
Leader of Non-Traditional  
Worship Music

**Dr. Rhonda Comrie**  
Organist

**Benjamin Maynard**  
Worship Tech  
Livestreaming Specialist  
ProPresenter Slide Designer

### CHURCH COUNCIL

**Dr. Karen Cummings-Larson**  
President

**Dr. Emily Truckenbrod**  
Vice President

**Terry Ackerman**  
Secretary

**Dr. Laura Schoenecker**  
Treasurer

**Steve Perry**  
Member At-Large

**The Rev. Dr. Darla Ann R. Kratzer**  
Pastor

### MINISTRY SUPPORT TEAM

**Kathy Nehrt:** Education

**Cindy Pugh:** Fellowship

**Ed Foppe:** IT

**Carol Orr:** Service

**Jan Vinson:** Worship

**Sunday School:**  
Lisa White

**Fair Trade Store:**  
Mike Williams  
vablu2@aol.com

**Newsletter Editor:**  
K. Cummings-Larson

**Facebook:**  
Maureen "Mo" Johnson

## COUNCIL BRIEFS

January has come and gone; one month into the new year. Did you plan to make changes to your life? Maybe you planned to get in better shape, try something new, or plan on a new path for your life. At OLLC there are oftentimes changes, some we may agree with, others we may not. Change can be exciting. However, change can also be hard when we don't want it.

The January council meeting focused on preparing for the Annual Meeting discussing

- anticipated giving for the upcoming year,
- presenting a balanced budget to the congregation for 2025,
- presentation of updated Mission, Vision, Values, & Focus Areas by the Identity & Action Team, and
- setting 2025 priorities for council.

The end of January at the Annual Meeting we reflected on the past year, at the same time we looked to the future and the possibilities for Our Lord's.

As I think of all the possibilities and potential changes in store for OLLC, I am reminded of the song, **Turn, Turn, Turn** by the Byrds; a song about the cyclical nature of life and the need for balance and hope.

*To everything turn, turn, turn  
There is a season turn, turn, turn  
And a time to every purpose under Heaven...  
A time to gain, a time to lose  
A time to rain, a time to sow  
A time for love, a time for hate  
A time for peace, I swear it's not too late*

The song is based on Ecclesiastes 3:1, "There is a time for everything, and a season for every activity under the heavens."

So, how are we supposed to deal with the changes we face in life and in our congregation? As Christians, we know that everything happens for a purpose, and God can work through any situation. While we might not see the purpose behind what we are experiencing, we can trust that God has a greater plan. While change can be hard, we can grow in our faith when we learn to embrace it. When we trust God's plan, He transforms us each and every day as His followers. So, as you experience change remember to trust in God's plan.

Yours in Christ, *Karen Cummings-Larson*

## FINANCIAL INFORMATION

Summary taken from report provided by OLLC Treasurer Laura Schoenecker  
If you have any questions, please contact Laura at [lswanso@siue.edu](mailto:lswanso@siue.edu).

### General Benevolence Income

December 2024..... \$31,230

### General Benevolence Expenses

December 2024..... \$27,508

Cash - Unrestricted .....\$8,194

Cash - Designated ..... \$97,161

**Total Cash ..... \$105,355**

*Thank you for sharing your financial resources with  
this congregation in support of the mission we  
share.*

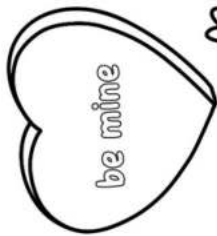
To give, simply scan this QR code with your smart phone. The QR code takes you directly to the OLLC giving page. On the giving page you have the opportunity to identify if your contribution is for Benevolence (church expenditures) or for one of the designated funds. Of course, cash or checks are always welcomed. No matter which method you choose when giving to OLLC, all donations received will help us sustain our ministries throughout the year.

### During December:

- The balance of the Monthly Emphasis Fund at the end of December 2024 was \$190.53 (School Supplies). Because the December Monthly Emphasis was Christmas with our Neighbors, the funds of \$420 donated went directly into the Elmwood Project Fund.
- \$3,875 to CS/IS for Synod Benevolence for December. The congregation's total sent to CS/IS for 2024 was \$27,275.83.
- \$650 was sent to Amare and \$650 to the International Institute of St. Louis for our Local Benevolence for December. The total sent to local organizations as Local Benevolence for 2024 was \$3,040.



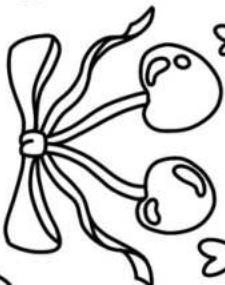
**GOD'S CANDY HEARTS**



L O V E L  
O E L O V E  
V O V L O  
E L E L

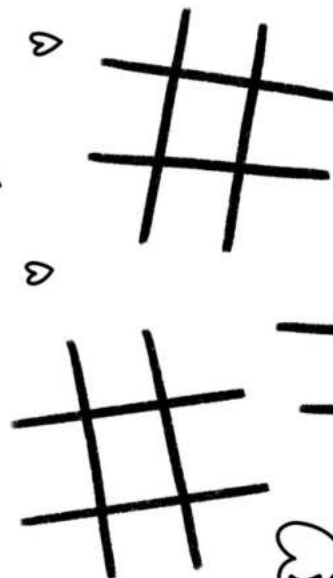
How many times  
can you find the  
word "love"?

Help spread God's love to the world!



**FAITH  
HOPE  
LOVE**

the greatest of these!  
1 Cor. 13:13



Play tic tac toe  
with X's + O's!



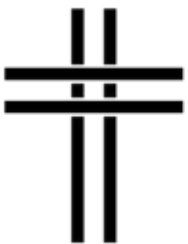
# FEBRUARY 2025 CALENDAR

SUN	MON	TUES	WED	THUR	FRI	SAT
 		 	 	 <p style="text-align: center;"><b>February Giving Emphasis</b></p>	<p style="text-align: center;"><b>1</b></p> <p><b>7:00 AM</b> Worker Bees breakfast  <b>8:00 AM</b> Worker Bees - OLLC  <b>3:30 PM</b> Praise Band Practice  <b>5:00 PM</b> Worship: Praise Service  <b>6:15 PM</b> Hospitality</p>	
<p style="text-align: center;"><b>2</b></p> <p><b>9:00 AM</b> Worship  <b>10:15 AM - Education</b>  <b>Classes</b> - Pre-K, Elementary, Confirmation, High School Class            Adult Bible Study - FH  <b>10:15 AM</b> Hospitality</p>	<p style="text-align: center;"><b>3</b></p> <p><b>10:00 AM</b> Questions Bible Study - LC            Conference Room  <b>6:30 PM</b> Ministry Support Team - ZOOM</p>	<p style="text-align: center;"><b>4</b></p> <p><b>10:30 AM</b> Worship Service at Well Care Home (Elmwood)  <b>7:00 PM</b> NAR-ANON - LC Conference Room  <b>7:00 PM</b> NA Recovery - LC Basement</p>	<p style="text-align: center;"><b>5</b></p> <p><b>3:00 PM</b> Feeding the Soul - LC Conference Room  <b>6:15-7:15 PM</b> Choir Rehearsal  <b>7:15-8:15 PM</b> Handbell Choir Rehearsal</p>	<p style="text-align: center;"><b>6</b></p> <p><b>6:00-8:00PM</b> Rehearsal For Concert</p>	<p style="text-align: center;"><b>7</b></p> <p><b>Pastor's Sabbath</b>  <b>6:00 PM</b> Girl Scout Event</p>	<p style="text-align: center;"><b>8</b></p> <p><b>7:00 AM</b> Girl Scout Event  <b>3:30 PM</b> Praise Band Practice  <b>5:00 PM</b> Worship: Praise Service  <b>6:15 PM</b> Hospitality</p>
<p style="text-align: center;"><b>9</b></p> <p><b>9:00 AM</b> Worship  <b>10:15 AM - Education</b>  <b>Classes</b> - Pre-K, Elementary, Confirmation, High School Class            Adult Bible Study - FH  <b>10:15 AM</b> Hospitality  <b>10:45 AM</b> Worship - 2nd Sunday, 2nd Service  <b>3:00-5:00 PM</b> OLLC Game Night</p>	<p style="text-align: center;"><b>10</b></p> <p><b>10:00 AM</b> Questions Bible Study - LC Conference Room  <b>6:00 PM</b> Girl Scouts - LC  <b>6:30 PM</b> Ministry Support Team - ZOOM</p>	<p style="text-align: center;"><b>11</b></p> <p><b>10:30 AM</b> Service at Well Care Home  <b>7:00 PM</b> NAR-ANON - LC Conference Room  <b>7:00 PM</b> NA Recovery - LC Basement</p>	<p style="text-align: center;"><b>12</b></p> <p><b>3:00 PM</b> Feeding the Soul - LC Conference Room  <b>6:15-7:15 PM</b> Choir Rehearsal  <b>7:00 PM</b> Lakeview Garden Club Meeting - WC  <b>7:15-8:15 PM</b> Handbell Choir Rehearsal</p>	<p style="text-align: center;"><b>13</b></p> <p><b>10:00 AM</b> Morning Glories - WC  <b>6:00-8:00PM</b> Rehearsal For Concert</p>	<p style="text-align: center;"><b>14</b></p> <p><b>Pastor's Sabbath</b></p>	<p style="text-align: center;"><b>15</b></p> <p><b>10:00 AM</b> La Leche League - WC  <b>3:30 PM</b> Praise Band Practice  <b>5:00 PM</b> Worship: Praise Service  <b>6:00 PM</b> Spaghetti Dinner &amp; Concert</p>
<p style="text-align: center;"><b>16</b></p> <p><b>9:00 AM</b> Worship  <b>10:15 AM - Education</b>  <b>Classes</b> - Pre-K, Elementary, Confirmation, High School Class            Adult Bible Study - FH  <b>10:15 AM</b> Hospitality</p>	<p style="text-align: center;"><b>17</b> <b>Newsletter Deadline</b></p> <p><b>10:00 AM</b> Questions Bible Study - LC Conference Room  <b>11:30 AM</b> Serendipity Book Club - LC  <b>6:30 PM</b> Church Council - LC</p>	<p style="text-align: center;"><b>18</b></p> <p><b>10:30 AM</b> Service at Well Care Home  <b>7:00 PM</b> NAR-ANON - LC Conference Room  <b>7:00 PM</b> NA Recovery - LC Basement</p>	<p style="text-align: center;"><b>19</b></p> <p><b>12:00 - 3:00 PM</b> OLLC Crafters (FH)  <b>3:00 PM</b> Feeding the Soul - LC Conference Room  <b>6:15-7:15 PM</b> Choir Rehearsal  <b>7:15-8:15 PM</b> Handbell Choir Rehearsal</p>	<p style="text-align: center;"><b>20</b></p>	<p style="text-align: center;"><b>21</b></p> <p><b>Pastor's Sabbath</b></p>	<p style="text-align: center;"><b>22</b></p> <p><b>3:30 PM</b> Praise Band Practice  <b>5:00 PM</b> Worship: Praise Service  <b>6:15 PM</b> Hospitality</p>
<p style="text-align: center;"><b>23</b></p> <p><b>9:00 AM</b> Worship  <b>10:15 AM - Education</b>  <b>Classes</b> - Pre-K, Elementary, Confirmation, High School Class            Adult Bible Study - FH  <b>10:15 AM</b> Hospitality  <b>1:00 - 5:00 PM</b> - Herding Alphas, Mac's in Highland</p>	<p style="text-align: center;"><b>24</b></p> <p><b>10:00 AM</b> Questions Bible Study - LC Conference Room  <b>6:00 PM</b> Girl Scouts - LC</p>	<p style="text-align: center;"><b>25</b></p> <p><b>10:30 AM</b> Worship Service at Well Care Home (Elmwood)  <b>7:00 PM</b> NAR-ANON - LC Conference Room  <b>7:00 PM</b> NA Recovery LC Basement</p>	<p style="text-align: center;"><b>26</b></p> <p><b>12:00-3:00</b> OLLC Crafters - FH  <b>3:00 PM</b> Feeding the Soul - LC Conference Room  <b>6:15-7:15 PM</b> Choir Rehearsal  <b>7:15-8:15 PM</b> Handbell Choir Rehearsal</p>	<p style="text-align: center;"><b>27</b></p> <p><b>10:00 AM</b> Morning Glories - WC  <b>7:00 PM</b> Giving Emphasis Team - ZOOM</p>	<p style="text-align: center;"><b>28</b></p> <p><b>Pastor's Sabbath</b></p>	

*Matthew 11:28-30 (NRSVUE)*  
*For my yoke is easy, and my burden is light.  
I am gentle and humble in heart, and you will find rest for your souls,  
and I will give you rest. Take my yoke upon you, and learn from me, for  
I am gentle and humble in heart, and you will find rest for your souls.  
Come to me, all you who are weary and are carrying heavy burdens,*

**"The Spirit of Our Lord's News"  
Our Lord's Lutheran Church  
150 Wilma Drive  
Maryville, IL 62062  
(618) 345-5692 (Office Bldg.)  
[www.OURLORDS.org](http://www.OURLORDS.org)**

**NON-PROFIT ORG.  
US Postage Paid  
Maryville, IL  
62062  
Permit #2**



**February 2025 Newsletter**

**RETURN SERVICE REQUESTED**